



The Filter Press in operation: the solids laden slurry is pumped under pressure into the press chambers through the piping at the stationary head of the filter press, via the feed connection. As each cake chamber fills with slurry, the liquid passes through the cloth medium, across the drain-field, through the drain ports and exits via gravity out of the corner discharge eyes.



• Produces low moisture cake



FILTER PRESS



• Filtered Water

470mm (18") 2.5ft³

- 16 plates
- 1 1/2" air operated diaphragm pump
- PLC and HMI

Recommended for:

- Pre-Cast Plants
- Ready Mix Plants with up to 10 trucks
- Gray water volumes up to 8,000 gallons

Gray Water Processing*

- Cycle time: 4-6 minutes with 20% solids laden slurry
- Cycle captures approx. 140lbs
- Approx. 3/4 ton per hour w/20% slurry solids

630mm (24") 4.2ft³

- 14 plates
- 1 1/2" air operated diaphragm pump
- PLC and HMI

Recommended for:

- Ready Mix Plants 8-15 trucks
- Gray water volumes up to 17,000 gallons

Gray Water Processing*

- Cycle time: 8-11 minutes with 20% solids laden slurry
- Cycle captures approx. 275lbs
- Approx. 1 ton per hour w/20% slurry solids

800mm (32") 8.5ft³

- 16 plates
- 2" air operated diaphragm pump
- PLC and HMI

Recommended for:

- Ready Mix Plants with up to 15-25 trucks
- Gray water volumes up to 26,000 gallons

Gray Water Processing*

- Cycle time: 11-13 minutes with 20% solids laden slurry
- Cycle captures approx. 550lbs
- Approx. 1 1/2 ton per hour w/20% slurry solids

1000mm (40") 20ft³

- 19 plates
- 3" air operated diaphragm pump
- PLC and HMI

Recommended for:

- Ready Mix Plants with up to 25-35 trucks
- Gray water volumes up to 35,000 gallons

Gray Water Processing*

- Cycle time: 15-18 minutes with 20% solids laden slurry
- Cycle captures approx. 1100lbs
- Approx. 2 ton per hour w/20% slurry solids



Engineering Liquids Solids Separation for *Over One Hundred and Forty-Six Years*

***Note:**

- The filter press is for processing gray water from the reclamation process.
- Aggregate is to be removed from slurry prior to the filter press process.
- An agitated source of gray water is key for efficient processing.
- Processing times are approximates and will vary depending on gray water density and solids content.



Above: Temporary installation on blocks

Below: Temporary installation I-beam frame over pit

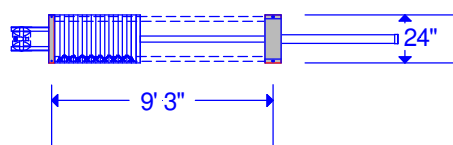
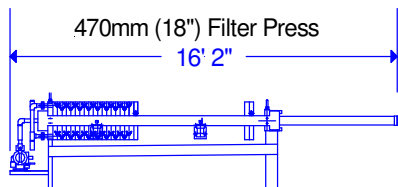


Below: Filtered water gravity flows to capture pond



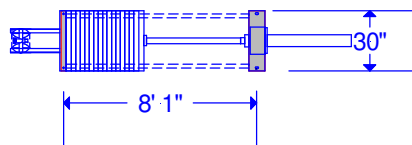
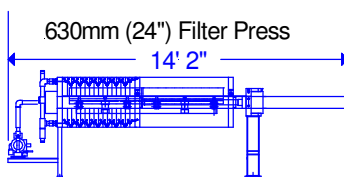
Considerations for Press installation:

1. Press Location:
 - a. Elevate press on walls
 - i. Filtered water discharge
 1. Gravity to containment area/tank
 2. Sump pump transfer kit option
 - b. Cake drop area – Clean out method and schedule
2. Gray water source, agitation
 - a. If Enviro-Port spillover tank – Filter Press feed kit needed
 - b. If Pond or capture pits – Agitation sump pump needed
3. Run off water
 - a. Some water is expected from the dropping cakes, press cloth weeping and customers washing down the cloth after use, locate press so process water can be directed to capture basin
4. Air Supply:
 - a. 470mm, 630mm, & 800mm- 50-70cfm@100psi
 - b. 1000mm-150cfm@100psi
5. Electrical:
 - a. 480Vac/3phase 60HZ 30 amp service



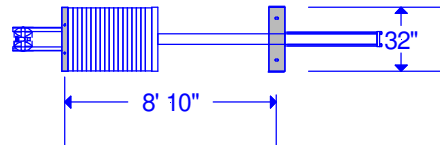
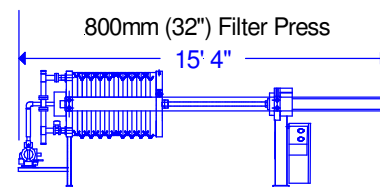
470mm (18") 2.5ft³

- Full weight 3,109lbs
- Empty weight 2,909lbs



630mm (24") 4.2ft³

- Full weight 3,428lbs
- Empty weight 3,092lbs



800mm (32") 8.5ft³

- Full weight 5,685lbs
- Empty weight 5,005lbs