

# **ENVIRO-PORT**

**READY-MIX RECLAMATION SYSTEMS**



## ***BASIC SEPARATION SERIES***

Dealer Version 1.2  
September 2012

# Contents

Description.....	3
Upgradable.....	3
Selecting the Right Series .....	4
Diagram of Operations.....	5
B232KUB – Basic 23-2000 Unloading Buffer.....	6
B132KUB – Basic 13-2000 Unloading Buffer.....	7
B1TTMDH – 1 Truck Tank Mounted Discharge Hood.....	8
B2TTMDH – 2 Truck Tank Mounted Discharge Hood.....	8
B2TFSDH – 2 Truck Free Standing Discharge Hood .....	9
B3TFSDH – 3 Truck Free Standing Discharge Hood .....	9
B4TFSDH – 4 Truck Free Standing Discharge Hood .....	10
48SDVS – 48” x 96” Single Deck Vibrating Screen .....	10
SPHWJC – Sump Pump Hand Winch Jib Crane .....	11
4100BH – 100’ Reel of 4” Black Suction/Discharge Hose .....	11
425SBH – 25’ Increments of 4” Black Suction/Discharge Hose.....	11
1820CS – 18”x 20’ x 15° Conveyor System.....	11
1830CS – 18”x 30’ x 15° Conveyor System.....	11
AHTS11 – Automatic Heat Tape System .....	11
2HPCA1 – 2HP Air Compressor System.....	11
BEPESU1 – Equipment Setup .....	11
BEPESU2 – Startup and Training.....	11
BELC575 – 575/3PH Electrical Systems Wiring .....	11
BELC240 – 240/3PH Electrical Systems Wiring .....	11
BELC208 – 208/3PH Electrical Systems Wiring .....	11

# BASIC SEPARATION SERIES

## Description

Enviro-Port's Basic Separation Series is a solid foundation for assisting customers in meeting:

- § Environmental compliance
- § Truck washout needs
- § Reclaiming sand and stone

This series provides customers with these options:

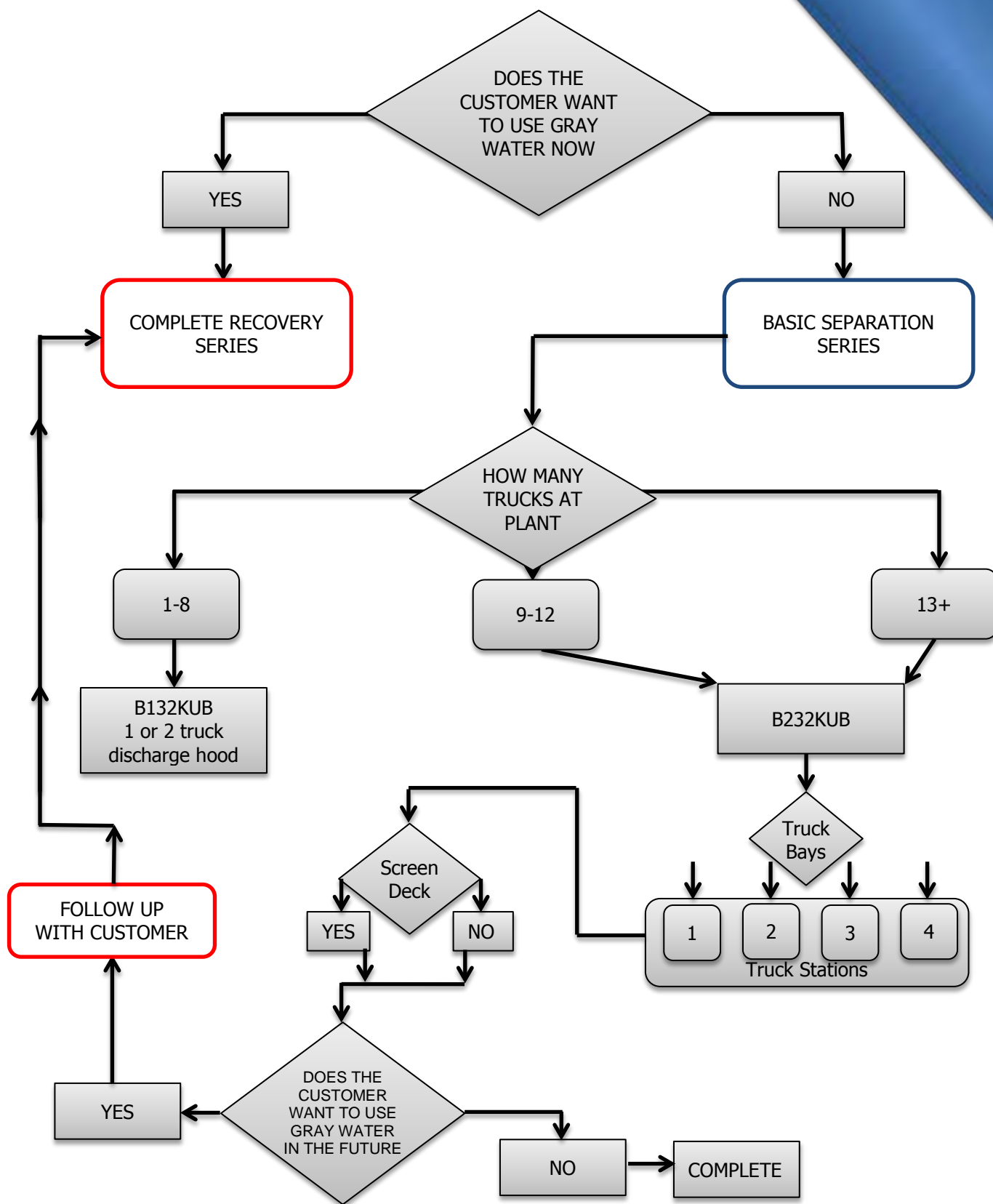
- § Washing out 1-4 truck(s)
- § Addition of a Single Deck Vibrating Screen to further separate the sand from the stone

## Upgradable

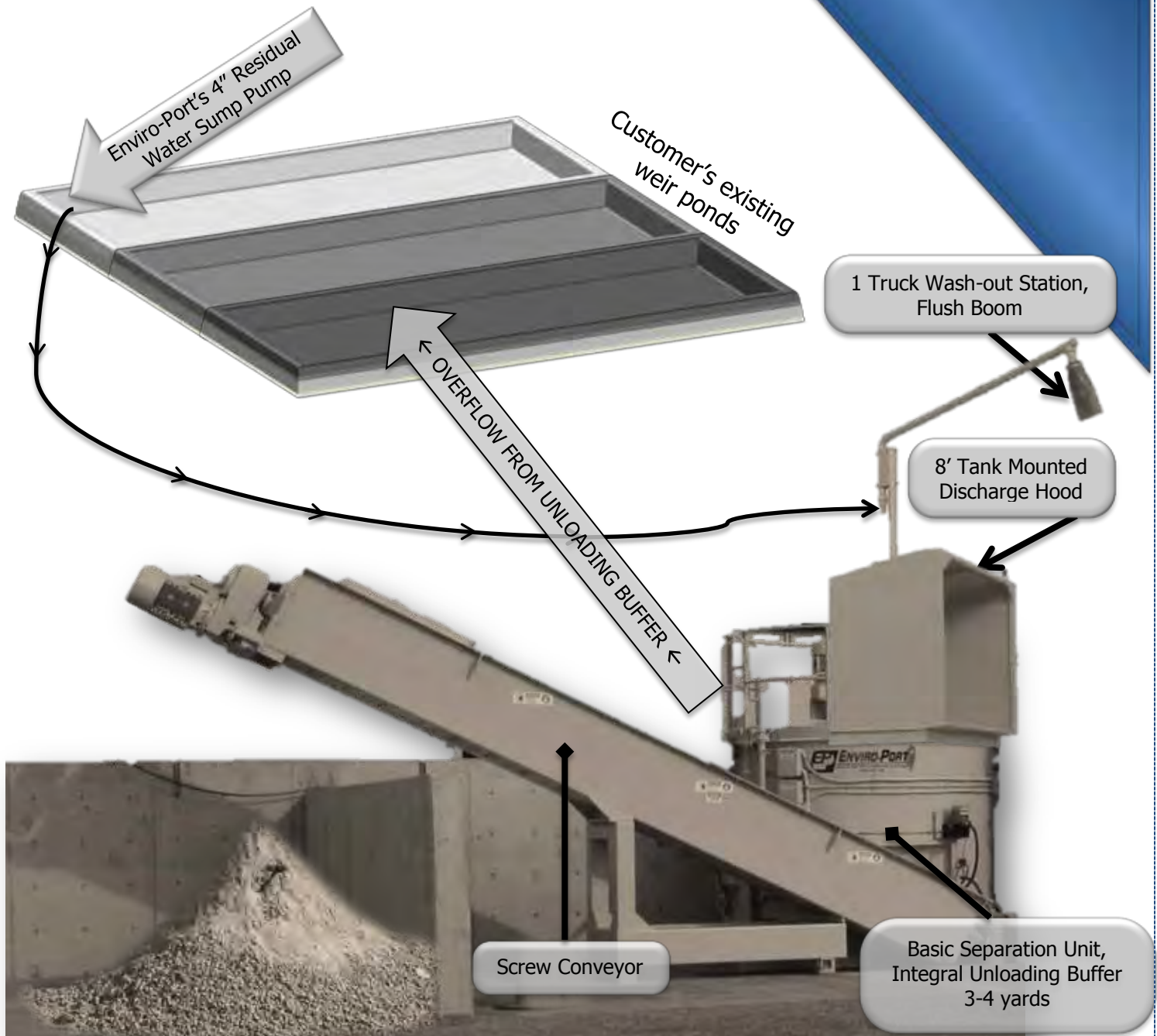
Should a plant's environmental criteria change; the Basic Separation Series can be upgraded, easily to the *Complete Recovery Series* by adding an agitation tank with gray water rebatching technology.



## Selecting the Right Series



## Diagram of Operations



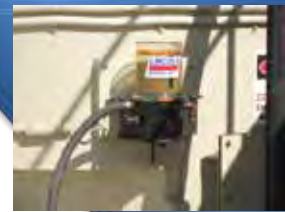
### Summary of Operations

This Basic Separation Series operates as a washout station with sand and stone separation.

- 1) Drivers will approach discharge hood with hopper aligned to a flush boom.
- 2) Driver presses the green System Start Button. Which then illuminates, and initiates the screw conveyor, residual washout pump and opens the respective valve(s).
- 3) The driver will receive water for a preset time. Once the button is no longer illuminated, the driver can discharge the contents of his truck into the intake hood.
- 4) The driver may repeat this as needed or desired.

## B232KUB – Basic 23-2000 Unloading Buffer

- § Integral Unloading Buffer System 3-4 yards (standard):
  - Separation tank volume 2,000 gallons
- § Discharge Rate of 25-30 yd<sup>3</sup> per hour



Auto Lube System



A.R. Replaceable Flights

- § Tank Constructions:
  - Tank Walls 1/4" A-36 plate
  - Tank Floor 5/16 A-36 plate
  - Top access door 23" x 23" (one)
  - Lower access door 25" x 25" (one)
  - 3" Butterfly hand valve, drain port

B23-2000 Basic Separation Unit  
Dry Weight 16,900lbs, Full Load Weight 36,900lbs

- § 200 mesh aggregate removal capabilities
- § 1.5" aggregate receiving capabilities
- § Cast scraper blades, wear estimate: 2 – 3 years contingent on aggregate type and volume of return

- § Agitator Drive:
  - 10hp Nord motor with lock out safety disconnect
  - 8382 Nord Direct Drive Speed Reducer
  - Output drive shaft 4.062", #1018 Cold Rolled

- § Dewatering Screw Conveyor Construction:
  - Rock-Box Square Housing 27" x 27" x 1/4" Wall – For self-adjusting of auger flights
  - A.R. 400 Flights 23" x 22°, wear estimate: 1.5 – 3 years, contingent on aggregate type, and volume of return
  - Drive Unit:
    - § 25hp Nord motor with lock out safety disconnect
    - § 7382 Nord Speed Reducer
    - § Automatic Lubrication System (standard)
- § Washout station: 4" Residual Water Sump Pump 7.5 HP 1750rpm input 4" discharge
- § Control System: Relay Logic



Discharge Hood 8' wide tank mounted  
1 Truck washout station  
3/16" and 10ga. plate steel construction

## B132KUB – Basic 13-2000 Unloading Buffer

- § Integral Unloading Buffer System 3-4 yards (standard):
  - Separation tank volume 2,000 gallons
- § Discharge Rate of 10-15 yd<sup>3</sup> per hour



B13-2000 Basic Separation Unit  
Dry Weight 15,400lbs, Full Load Weight 35,400lbs



Auto Lube System



Chrome Buildup Flighting  
13" x 22° x 3/8"

- § 200 mesh aggregate removal capabilities
- § 1.5" aggregate receiving capabilities
- § Cast scraper blades, wear estimate: 2 – 3 years contingent on aggregate type and volume of return

- § Agitator Drive:
  - 10hp Nord motor with lock out safety disconnect
  - 8382 Nord Direct Drive Speed Reducer
  - Output drive shaft 4.062", #1018 Cold Rolled

- § Dewatering Screw Conveyor Construction:
  - Rock-Box Square Housing 18" x 18" x 1/4" Wall – For self-adjusting of auger flights
  - Chrome Buildup Flighting 13" x 22° x 3/8", wear estimate: 1.5 – 3 years, contingent on aggregate type, and volume of return
  - Drive Unit:
    - § 15hp Nord Speed Reducer with lock out safety disconnect
    - § Automatic Lubrication System (standard)

- § Washout station: 4" Residual Water Sump Pump 7.5 HP 1750rpm input 4" discharge
- § Control System: Relay Logic



Discharge Hood 8' wide tank mounted  
1 Truck washout station  
3/16" and 10ga. plate steel construction

## B1TTMDH – 1 Truck Tank Mounted Discharge Hood

- § 1 Truck Station (standard)
- § 8' wide
- § 3/16" and 10ga. plate steel construction
- § Shipping weight - approx. 1,100lbs



Splash pan & tank grate, installed with tank mount hoods

Visual and Audio Alarm System



Flush Boom start/stop & instructions

### One (1) Flush Boom System for Slurry Washout

- § Flush Boom complete with all necessary plumbing.
- § 3" butterfly pneumatic valve and an on/off switch.
- § Washout Station
- 7.5hp 1750rpm, 4" Residual water sump pump



## B2TTMDH – 2 Truck Tank Mounted Discharge Hood

- § Expands from standard 1 Truck to 2 Truck Stations
- § Auto Trough Flush
- § 17' wide
- § 3/16" plate steel construction
- § Shipping weight - approx. 2,050lbs

### Two (2) Flush Boom Systems for Slurry Washout

- § Each boom complete with all necessary plumbing.
- § 3" butterfly pneumatic valve and an on/off switch.
- § Washout Station
- 7.5hp 1750rpm,
- 4" Residual water sump pump



Splash pan & tank grate, installed with tank mount hoods

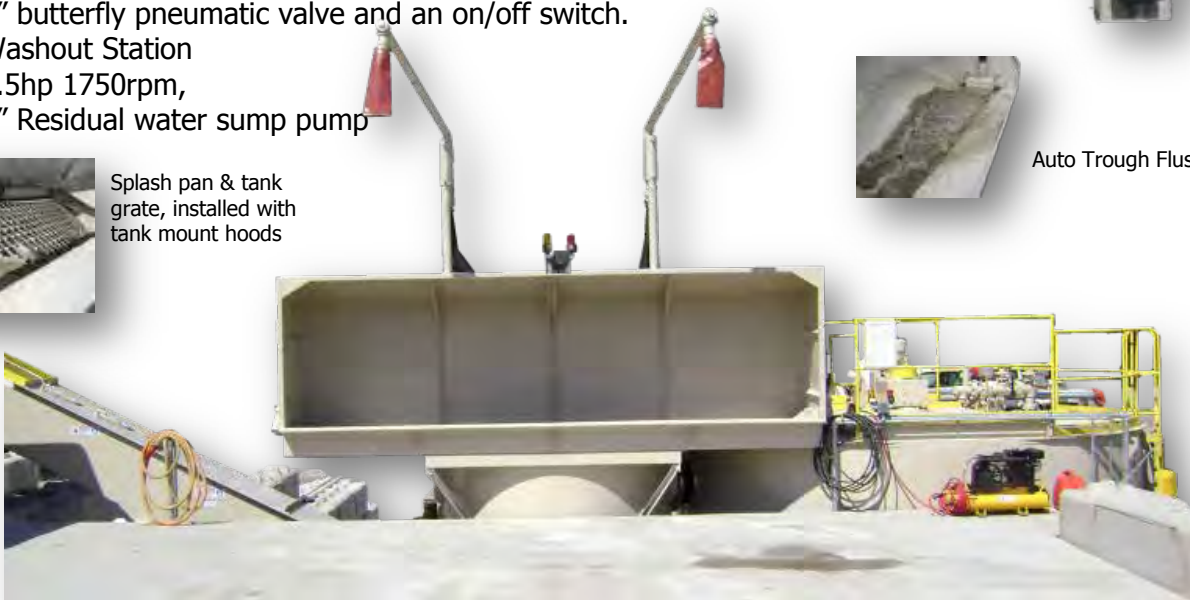


Flush Boom start/stop & instructions

Visual and Audio Alarm System



Auto Trough Flush





## B2TFSDH – 2 Truck Free Standing Discharge Hood

- § Expansion from standard 1 Truck to 2 Truck Stations
- § Auto Trough Flush
- § 20' wide
- § 3/16" plate steel construction
- § Shipping weight - approx. 3,800lbs



Flush Boom start/stop & instructions

### Two (2) Flush Boom Systems for Slurry Washout

- § Each boom complete with all necessary plumbing.
- § 3" butterfly pneumatic valve and an on/off switch.
- § Washout Station  
7.5hp 1750rpm,  
4" Residual water sump pump

Visual and Audio Alarm System



Auto Trough Flush



## B3TFSDH – 3 Truck Free Standing Discharge Hood

- § Expansion from standard 1 Truck to 3 Truck Stations
- § Auto Trough Flush
- § 30' wide
- § 3/16" plate steel construction
- § Shipping weight - approx. 5,700lbs

(2) Two Visual and Audio Alarm Systems



### Three (3) Flush Boom Systems for Slurry Washout

- § Each boom complete with all necessary plumbing.
- § 3" butterfly pneumatic valve and an on/off switch.
- § Washout Station  
15hp 1750rpm, 4" Residual water sump pump



Flush Boom start/stop & instructions



Auto Trough Flush



## B4TFSDH – 4 Truck Free Standing Discharge Hood

- § Expansion from standard 1 Truck to 4 Truck Stations
- § Auto Trough Flush
- § 43' wide
- § 3/16" plate steel construction
- § Shipping weight - approx. 7,900lbs

### Four (4) Flush Boom Systems for Slurry Washout

- § Each boom complete with all necessary plumbing.
- § 3" butterfly pneumatic valve and an on/off switch.
- § Washout Station
  - 15hp 1750rpm
  - 4" Residual water sump pump

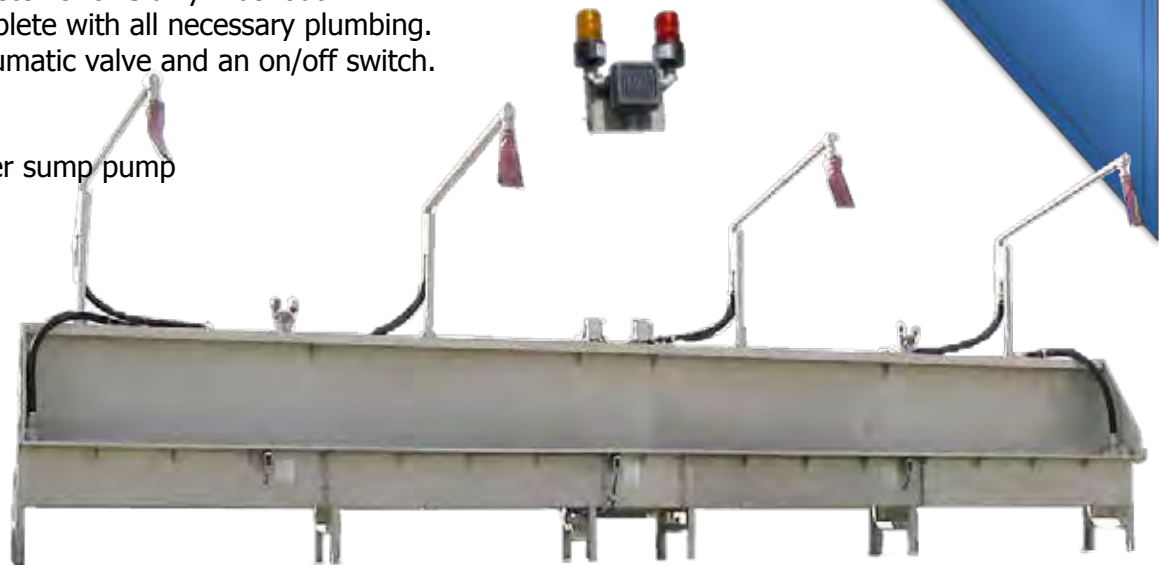
(2) Two Visual and Audio Alarm System



Flush Boom start/stop & instructions

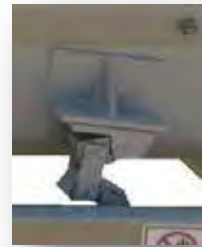


Auto Trough Flush



## 48SDVS – 48" x 96" Single Deck Vibrating Screen

- § C-Channel Extension Frame allowing up to a 13' wide bunker
- § Height Adjustment Kit
- § ROSTA Anti-vibration Mounting
- § Screen Cloth:
  - 1pc 48" x 48" x 7/32" vertical slot
  - 1pc 48" x 48" x 7/32" horizontal slot
- § Pre-Wired Motor Starter and Disconnect Box
- § Approximate shipping weight 2,500lbs



ROSTA SCREEN MOUNT



## **SPHWJC – Sump Pump Hand Winch Jib Crane**

- § Elevates sump pump from wedge pit system
- § Includes swivel base, cable, and hand winch

## **4100BH – 100' Reel of 4" Black Suction/Discharge Hose**

- § 150psi rating, steel spiral reinforced
- § Includes four (4) band clamps

## **425SBH – 25' Increments of 4" Black Suction/Discharge Hose**

- § 150psi rating, steel spiral reinforced
- § Cut to length at 25', 50', or 75'
- § Includes four (4) band clamps & one connector

## **1820CS – 18"x 20' x 15° Conveyor System**

- § Class 1 Speed Reducer with 3HP motor 12" Head terminal and 10" tail pulley
- § Support stands and emergency stop pull rope system
- § Prewired motor protection and service disconnect

## **1830CS – 18"x 30' x 15° Conveyor System**

- § Class 1 Speed Reducer with 3HP motor 12" Head terminal and 10" tail pulley
- § Support stands and emergency stop pull rope system
- § Prewired motor protection and service disconnect

## **AHTS11 – Automatic Heat Tape System**

- § Includes insulation of all fresh water lines on the Enviro-Port System
- § Temperature Sensitive, Auto ON/OFF

## **2HPCA1 – 2HP Air Compressor System**

- § Pre-Wired and Pre-Plumbed to the Enviro-Port System
- § Service Disconnect Box included and installed

## **BEPESU1 – Equipment Setup**

- § Two (2) Enviro-Port personnel onsite to unload and assemble equipment, (Customer Supplies Crane)

## **BEPESU2 – Startup and Training**

- § One (1) Enviro-Port personnel onsite to start equipment and conduct training on usage of system

## **BELC208 – 208/3PH Electrical Systems Wiring**

## **BELC240 – 240/3PH Electrical Systems Wiring**

## **BELC575 – 575/3PH Electrical Systems Wiring**