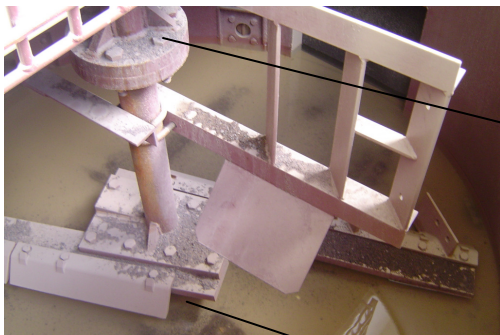




- 1** Returned ready mix is poured directly into the integrated buffer tank. Sand & Stone is swept into the screw conveyor while residual fines are kept in suspension in buffer tank awaiting time to fall to bottom of the tank, this increases efficiency of the aggregate reclamation by approx 20% over basic systems.
- 2** Clean sand & stone is transported above tank water level where it is given a final minimal water rinse and stockpiled for reuse. (Separation can be performed with optional screen deck.)
- 3** Enviro-Port's patented *Advanced Grey Water Rebatching Technology (AGWRT)* allows for residual water to be pumped back to the batch plant for reuse in controlled amounts, with known specific gravities and temperature. AGWRT allows the system to have smaller tank sizes for upto 600% greater efficiency.
- 4** A storm water & process water capture basin can be added to your plant or the system can utilize an existing one. This water can be automatically pumped into your Enviro-Port system for reuse in batching. The Enviro-Port system can utilize this water instead of creating more waste.

Integrated 4 cubic yard buffer tank



Suspended Agitator
=
No Bearings In Bottom Of The Tank

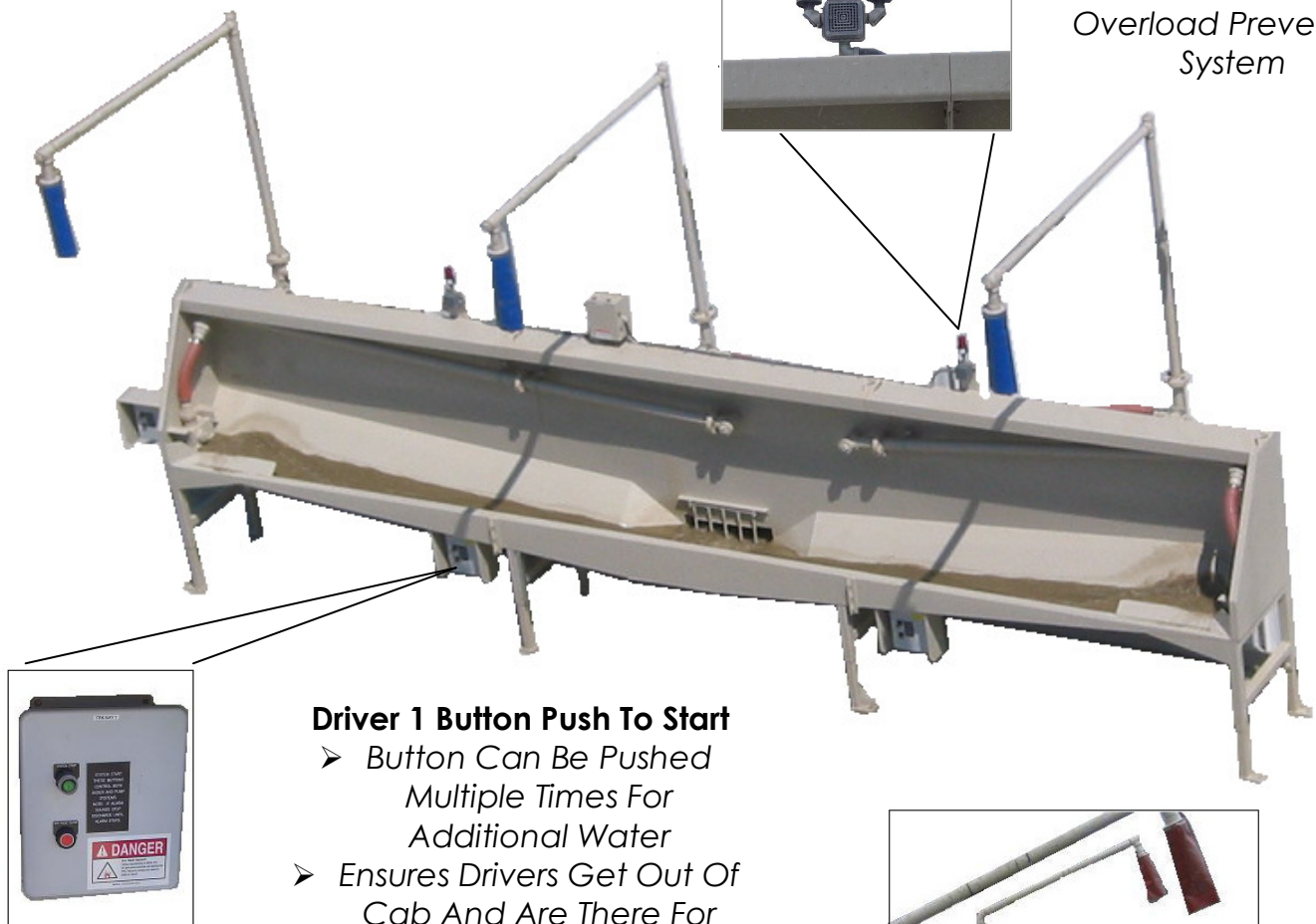


- 3" False Floor Bottom**
- Creates Material On Material Wear Atmosphere
 - Eliminates Tank Wear

- Replaceable AR 400 Auger Flighting With High Chrome Build Up**
- 5 Times The Life Expectancy Of Urethane Flighting

System Automatically Starts If System Senses Material In Buffer Tank

Audible & Visual Overload Prevention System



Driver 1 Button Push To Start

- Button Can Be Pushed Multiple Times For Additional Water
- Ensures Drivers Get Out Of Cab And Are There For Operation (Automatic Flushboom Switches Available)



High Velocity High Flow Automatic Trough Washout System

- Automatic Anti Overfill System – Trough will shut down if System is being overload with automatic restart
- System Cycles On/Off With Driver Operation And On Its Own Timed Cycles



Rubber Mount Screen Deck

- Smooth Quiet Operation
- No Belts Or Major Moving Parts To Maintain
- System Automatically Starts With Auger Screw

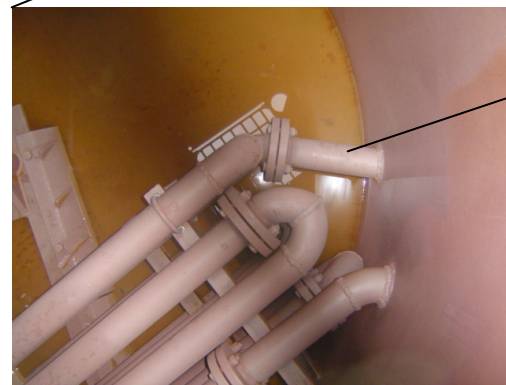
Oval & Round Tank Advantage

- Eliminates Build Up In Corners Reducing Tank Size And Requiring Heavy Equipment For Clean Outs



4 1/8" Solid Steel Shafts

Suspended By Oversized 10 Hp Nord 8232 Gear Box Which Eliminates Bearings In The Grey Water Tank



Heating & Cooling Heat Transfer Pipes

Slow Constant Agitation Advantage

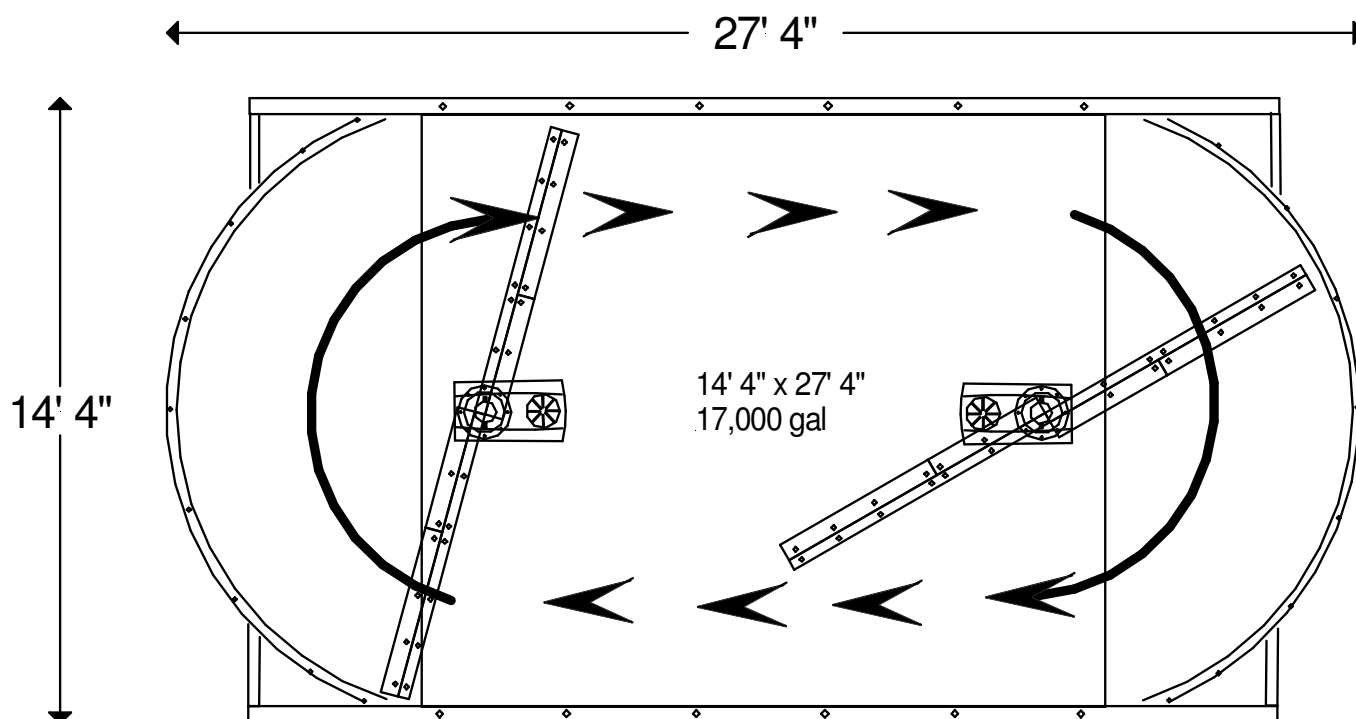
- Creates Much Better Mixing And Continuous Mixing Of Fines For QC
 - Continuous Mixing Allows For Constant Heat Transfer
- Pipe System Compared To False Floor Dramatically Increases Cooling Advantages & Efficiencies, Creates Heat Transfer At Tank Mid Point
- Constant Agitation Creates Centrifuge Effect Which Reduces Power Spikes & Power Consumption

Advanced Grey Water Rebatching Technology

It's **NOT** the size of your tank that matters;
 It's the amount of fines your tank can hold that matters

17,000 gal (Grey Water Storage Tank) + 2,000 gal (Cleaning or Auger Tank)	1.05 Specific Gravity	1.10 Specific Gravity	1.15 Specific Gravity	1.20 Specific Gravity (Highest recommend operational density)	1.30 Specific Gravity (Critical Mass Density, Refer to operation manual for procedures)
19,000 gal	7,923 pounds	15,846 pounds	23,769 pounds	31,692 pounds	47,538 pounds
Approximate Yards In The System	14.4 cy	28.8 cy	43.2 cy	57.6 cy	86.4 cy

Enviro-Port 19,000 gal System = Competition System of 76,000 – 114,000 gal



Tank Construction Specifications

- Agitator Arms Now Extended to Tank Walls Similar to Lower Agitator Blades
 - Tank Walls $\frac{1}{4}$ " A-36 Plate – Tank Floors $\frac{5}{16}$ " A-36 Plate
 - 19 Years & 160+ Systems With No Tank Rust Outs



Grey Water Density/Specific Gravity Meter

- Self Cleaning Meter
- No Moving Parts
- Provides Live & Updated Densities Automatically To Batch Computer

Automatic/Manual Pond & City Water Introduction

Maintenance Manual with Pictures built right into system

Live Density Automatically Updated & Interfaced With Batch Computer

Mixer Motor Amp Meter

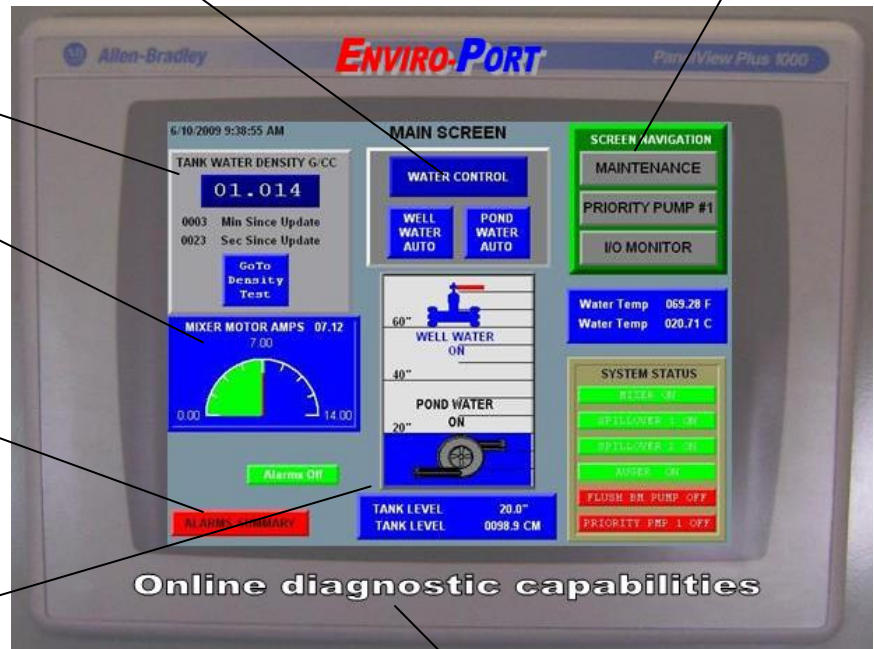
- Provides Information For Automatic System Start And Driver Overload Warning System

Alarm Notification Screens

- Provides Date & Time Of Any Driver Overload Warning Or System Failure

Tank Level Indicator

- Provides Batchman With Tank Levels

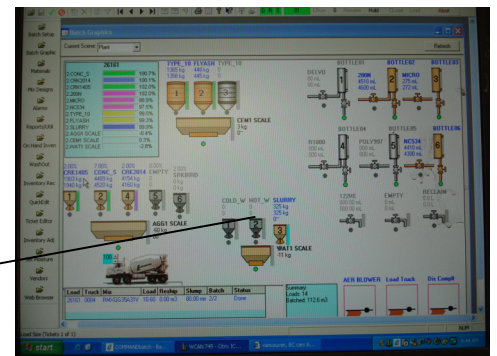


Online diagnostic capabilities

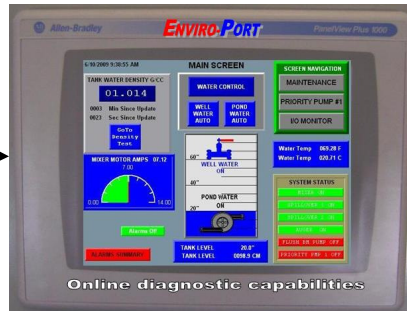
Online Diagnostic Capabilities

- Enviro-Port Can Interface At Customers Discretion Into The System To Assist With Software Troubleshooting

Ingredient	Amount	Target
AND-2	1352.000 LB	9036.115 LB
4-6	1410.000 LB	9325.388 LB
III-3	580.000 LB	3759.532 LB
SLAG	195.000 lb	1263.981 lb
RECYCLEH2O	1.040 sg	353.997 lb
WATER	304.00 lb	1227.49 lb
RETARDER	14 oz	91 oz
2000-PC	65 oz	422 oz
AE-260	4.00 oz	26 oz



Advanced Grey Water Rebatching Technology



Command Alkon

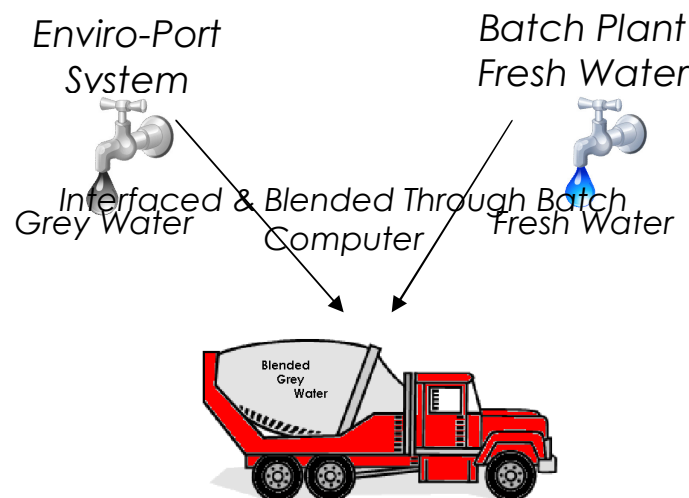
JONEL


MARCOTTE

Control Solutions

& All Others

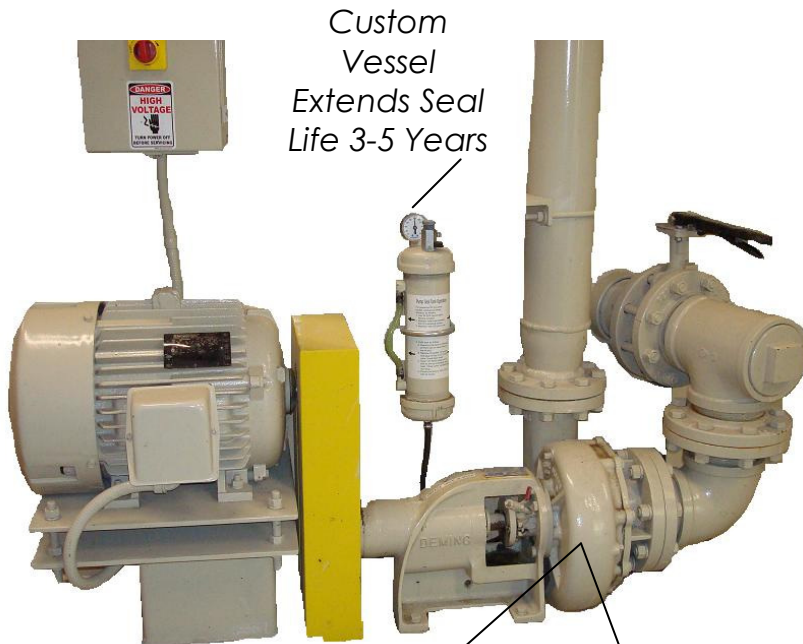
How It Works:



Target Density	Enviro-Port Grey Water	Batch-Plant Fresh Water	
1.05	1.10	1.00	50%/50%
1.05	1.15	1.00	33%/67%

AGWRT Advantages

- Heavy Duty Equipment Construction allows for reduced tank size & plant footprint – Using technology allows Enviro-Port to mix on the fly instead of having to mix within the reclamation system itself
- Reducing the amount of water to store reduces the amount of water to heat or chill, greatly reducing energy consumption – Why chill or heat more then you can use?
 - Allows for constant Quality Control without fluctuations due to mixing cycles



Custom Vessel
 Extends Seal Life 3-5 Years

External "Fiber Friendly" Pump System

- 300-700 gpm – Sized To Meet Plant Requirements
- Eliminates Need For Boat Winches And Regular Man Hours Maintenance For Cleaning Intakes
- Easy Access – No Heavy Pump Located On Top Of The Tanks
- Much More Cost Effective To Operate Over Submersibles
- Extra Large Intake Prevents Fibers From Clogging

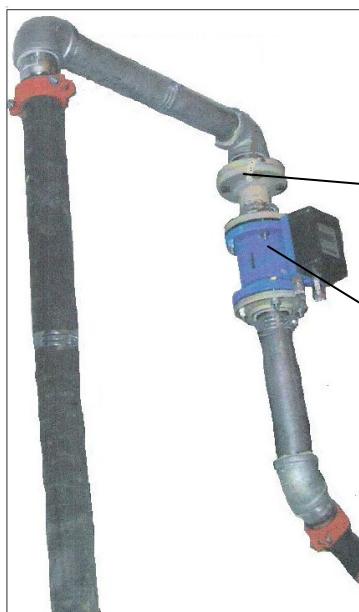
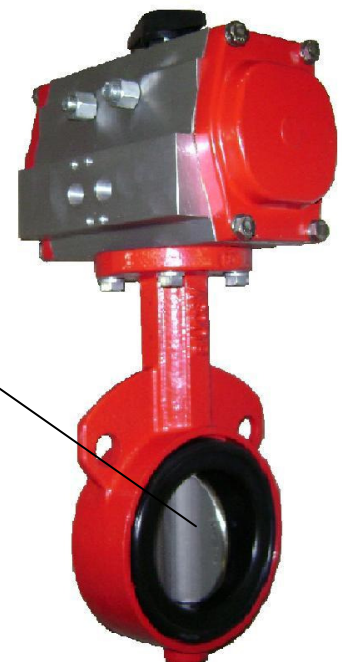
Heavy Duty Grey Water Impellers

- Self Cleaning Of Fiber Mesh
- Won't Clog Or Stall



Rugged Grey Water Valve System

- Self Cleaning Of Fiber mesh
- Allows All System Functions From 1-2 Pumps
- Dramatically Reduces Operating Pump Costs



Automatic Grey Water Line Flushback System

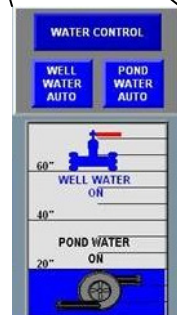
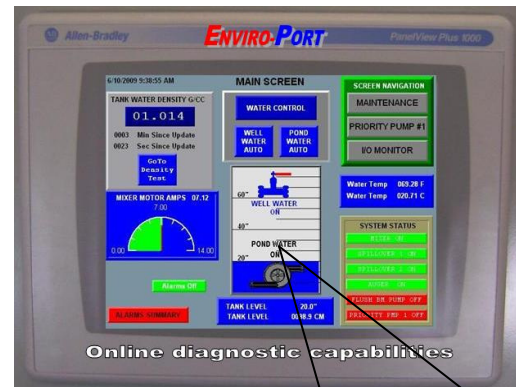
(For Both Metered & Weighed Water Plants)

- When Grey Water Drains Back To System, A Small Amount Of Fresh Water Flushes Out Line

Magnetic Flow Meter

(For Metered Water Plants Only)

- Impeller Free Design For Use With Fines



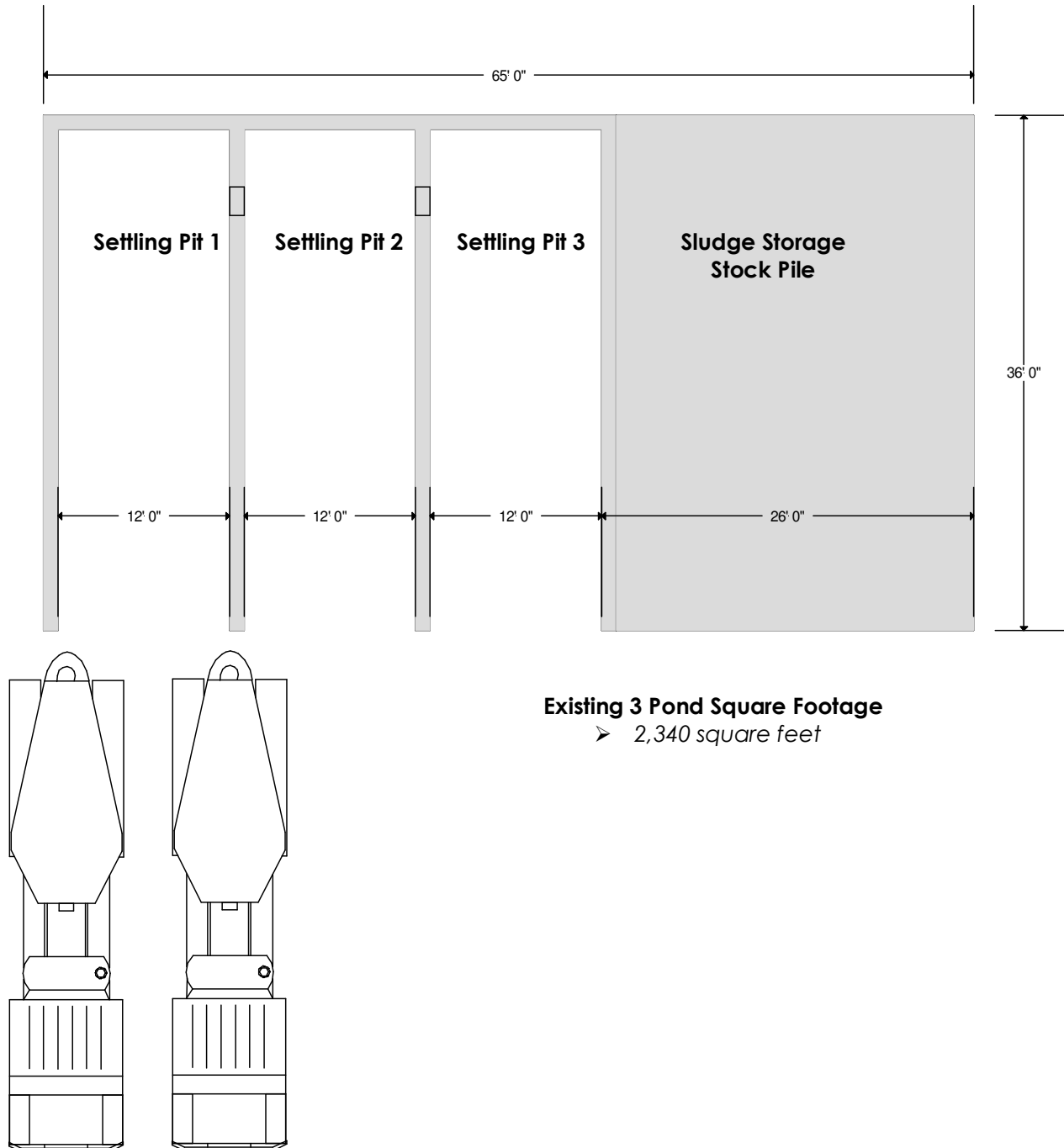
Non Contact Tank Level Monitor

- Displays Tank Levels In Batchroom To Batchman
- Automatically Introduces Pond Or City Water Into System To Refill Tanks
- Has Automatic Shut Off To Prevent Over Filling Of System
- No Moving Parts Submerged In Grey Water – Works On Sonar Technology

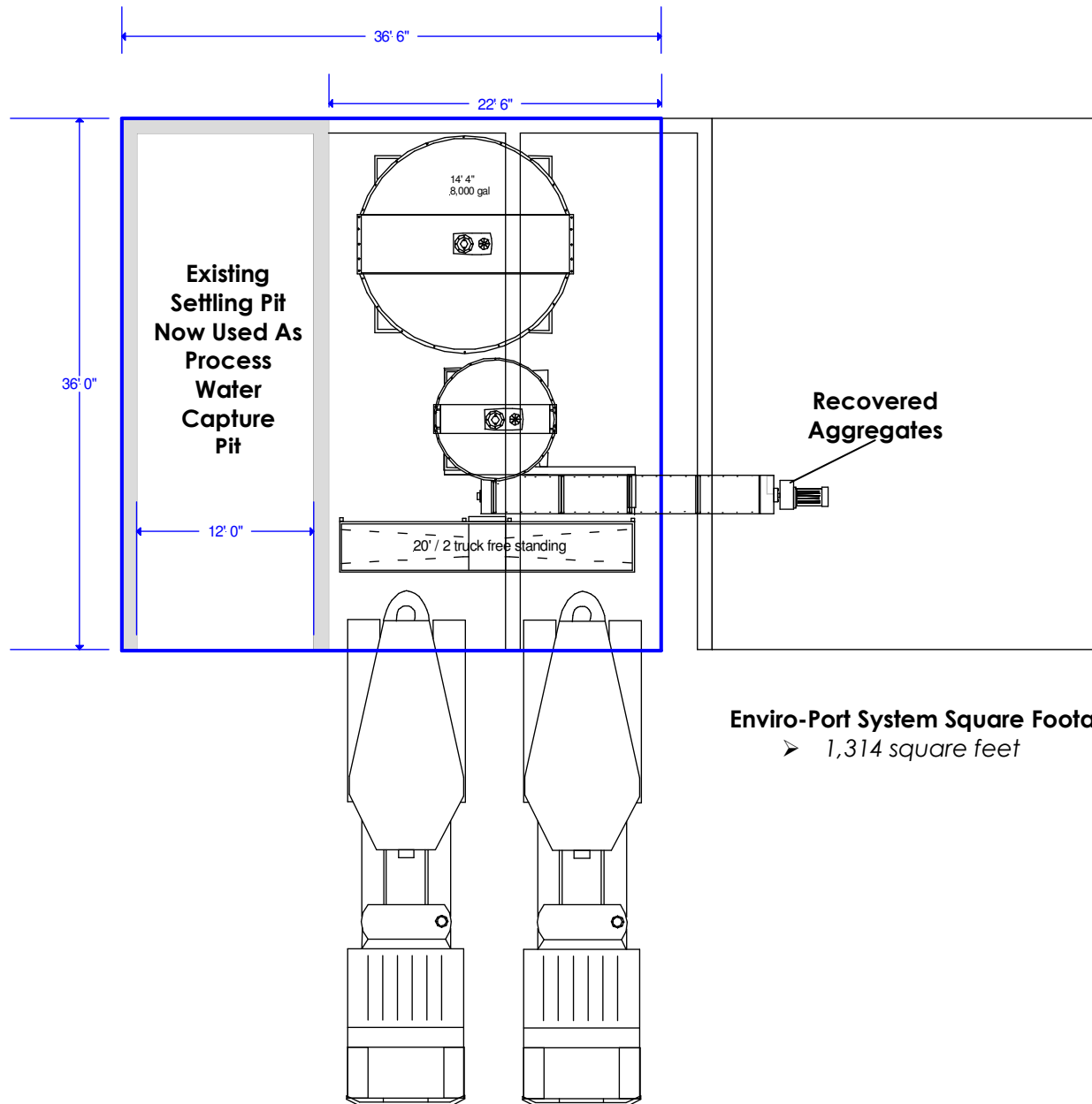
Grey Water Return Line Examples



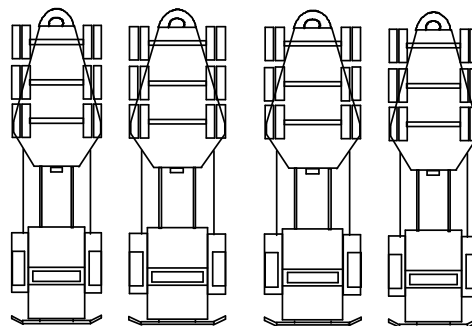
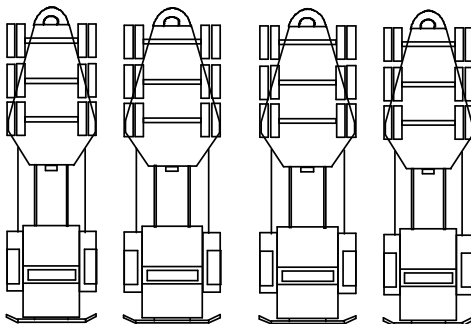
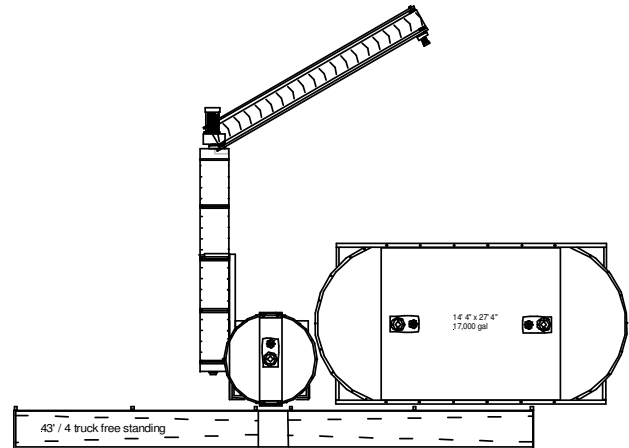
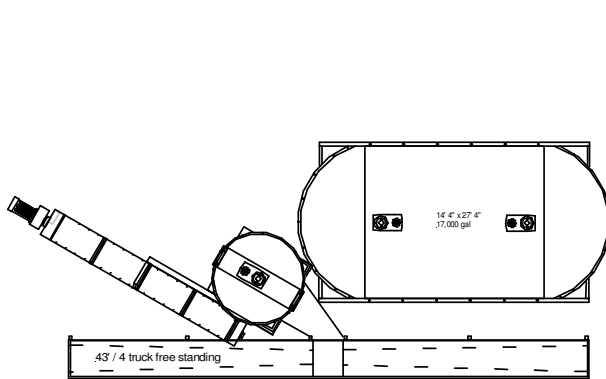
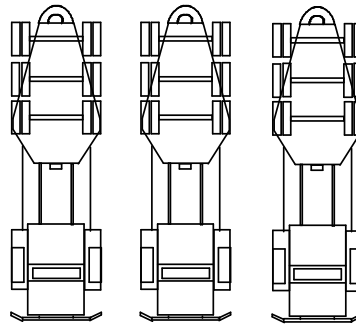
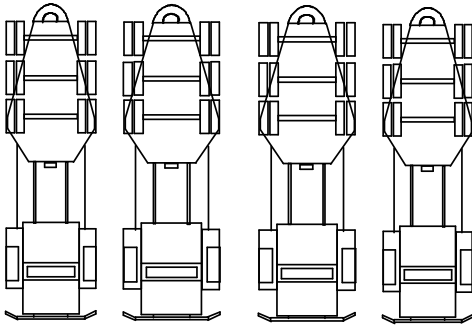
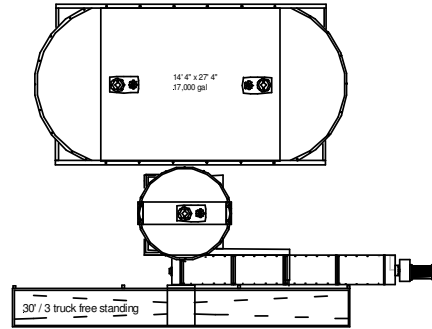
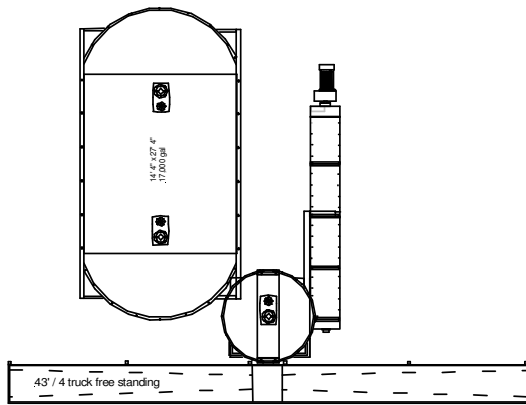
Traditional 3 Settling Pond System With Sludge Pile Storage



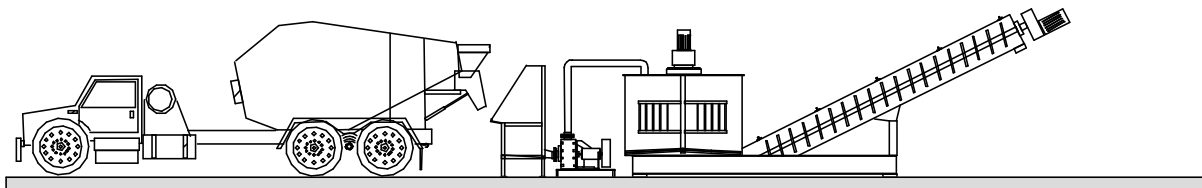
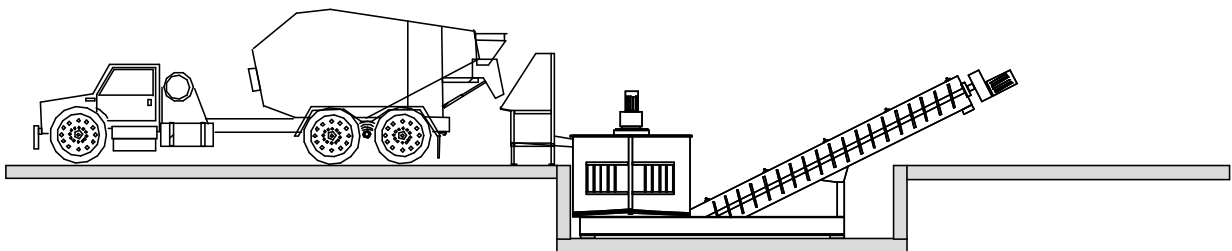
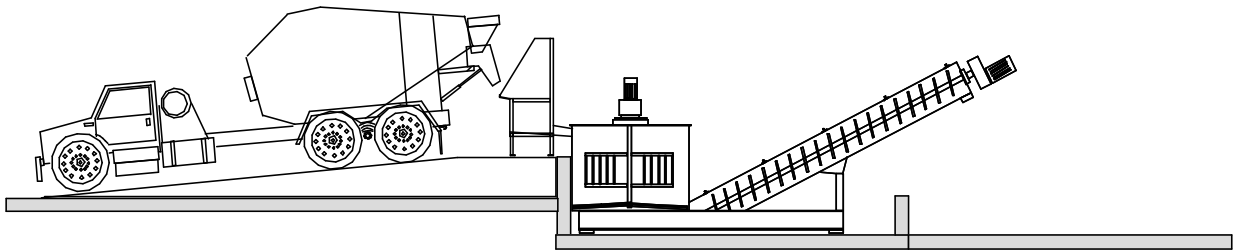
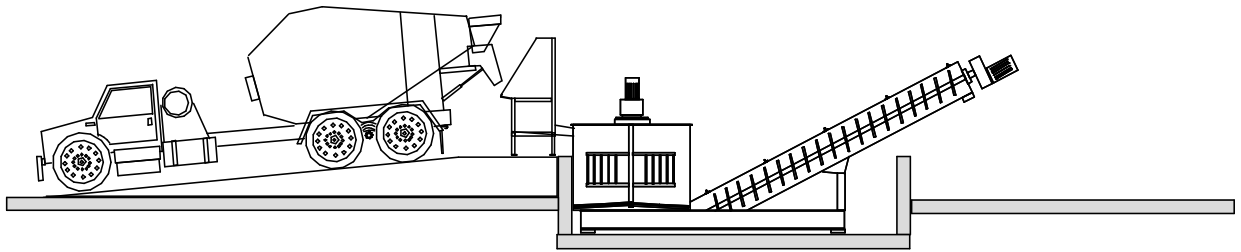
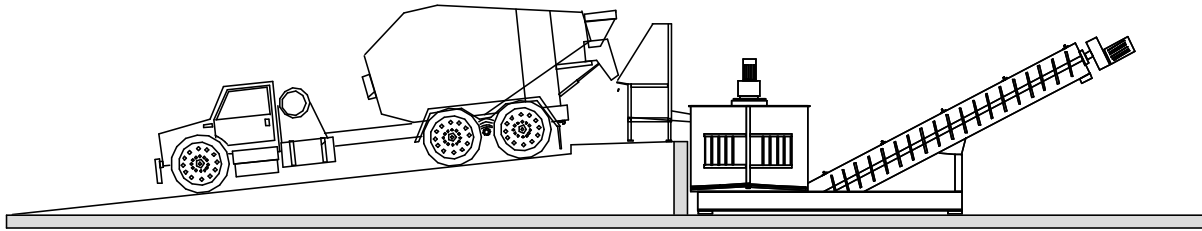
Enviro-Port System Retrofitted Onto Existing 3 Pond System



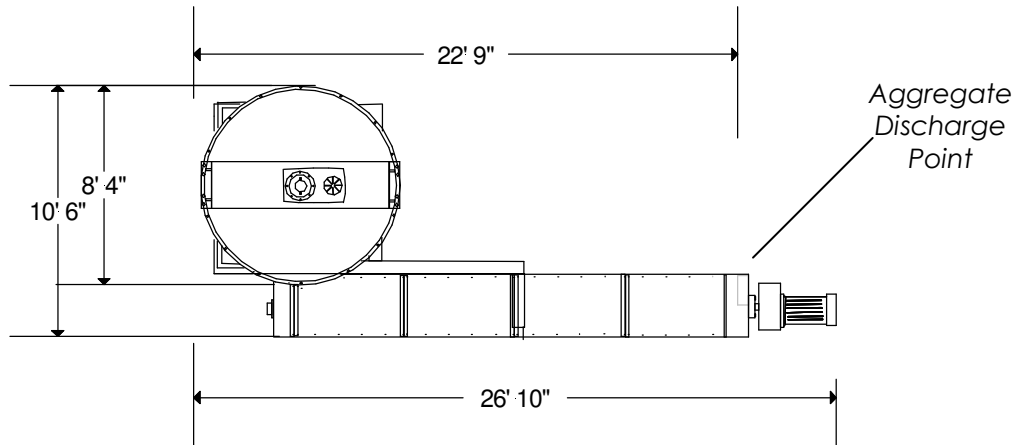
Varying Tank Style Layouts And Options



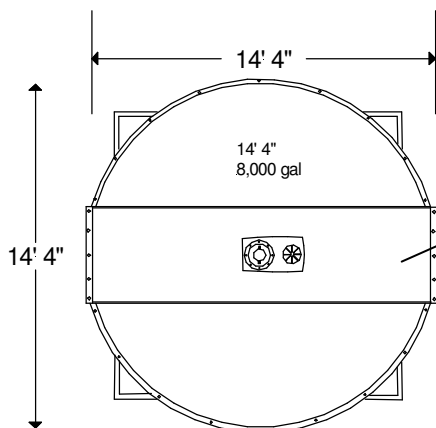
Sideview Installation Options



Equipment Measurements



2,000 gal Auger Cleaning Integrated Buffer Tank Measurements

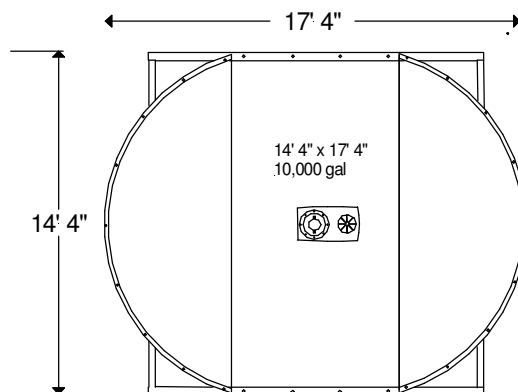


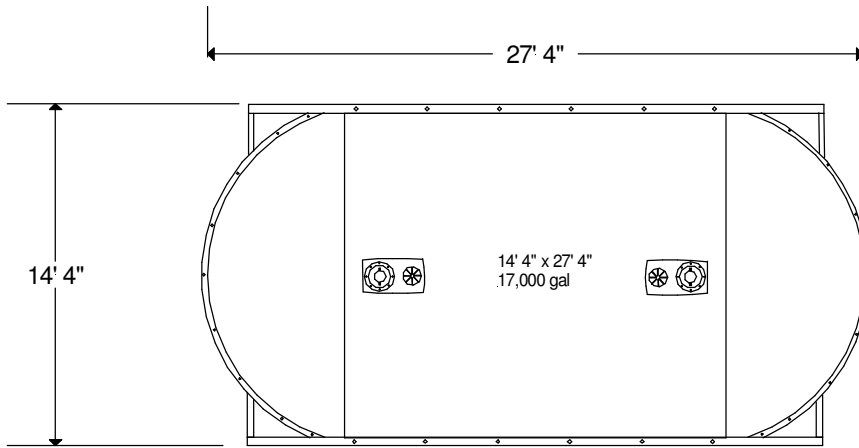
8,000 gal Grey Water Storage Tank

➤ Recommended for upto a maximum fleet size of 15 mixer trucks

10,000 gal Grey Water Storage Tank

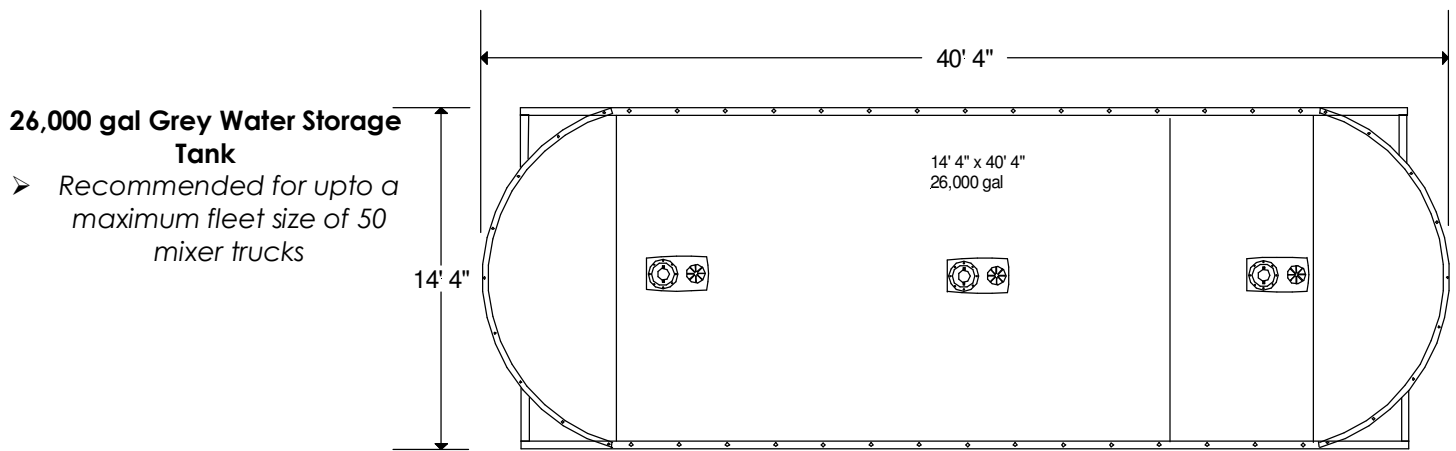
➤ Recommended for upto a maximum fleet size of 22 mixer trucks





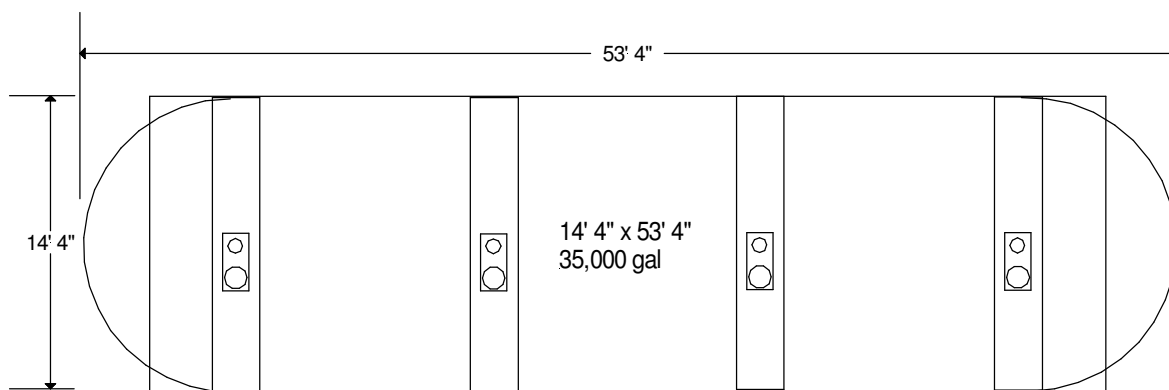
17,000 gal Grey Water Storage Tank

- Recommended for upto a maximum fleet size of 35 mixer trucks



26,000 gal Grey Water Storage Tank

- Recommended for upto a maximum fleet size of 50 mixer trucks



26,000 gal Grey Water Storage Tank

- Recommended for upto a maximum fleet size of 50 mixer trucks